



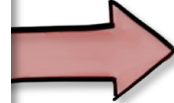
KEGON

Improve Your SAFe – on each Level with Impediments & Assessments

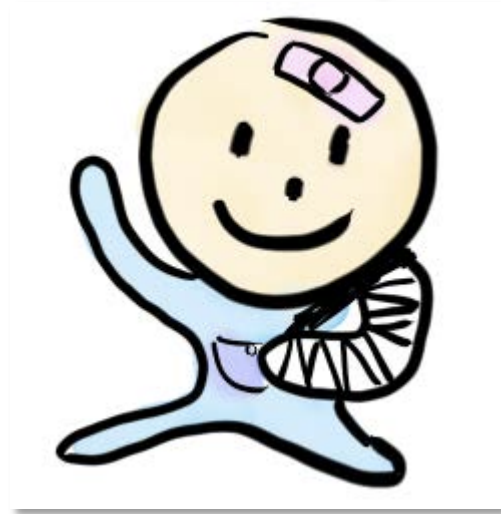
Kurt Jäger @ SAFe Summit Europe 2019

Failure Recovery is more important than Failure Avoidance

Failure Avoidance



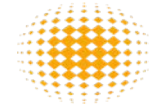
Failure Recovery





Finding the right doctor and therapy - is half of the health





Doctor = STE
RTE
SM



“

It is a misuse of our power to take responsibility for solving problems that belong to others.

—Peter Block



“

Good leaders must first become good servants.

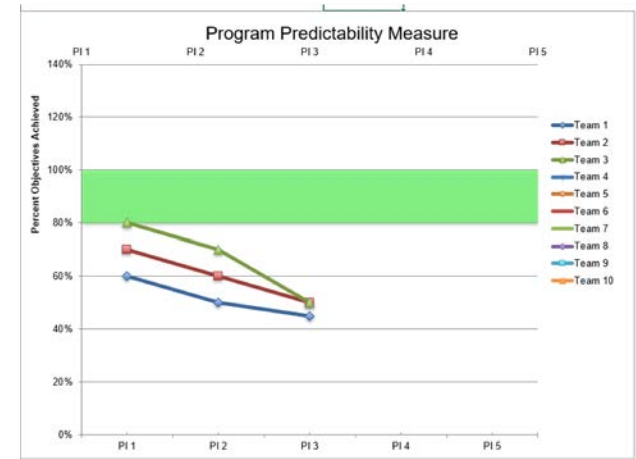
—Robert K. Greenleaf



Symptoms = Impediments on each level
Bad KPI's like
Predictability NPS EPS



1	Testumgebung Cassio pa	CHS AM/PSL/MST
1	Weitere Deploymentumgebungen nachfragen wg. #Prozesszone	RKR/IT-I RKR
12	zu wenige Besprechungsräume	JFU → PS
12	Tests parallelisieren	Team
12	Gradle nutzen	Team
12	vorgefüllte Test-DB paralleler Produktionsbetrieb	Team
12	IBM: Build kaputt	JS6 → MDM
15	Cas-Umgebung f. Ablösebetag	MST/NHR



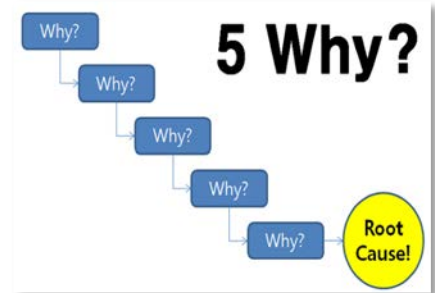


=

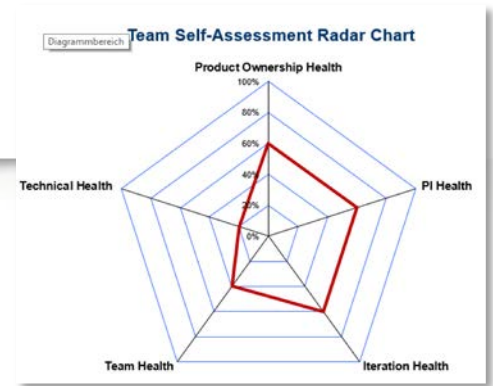
Gemba walks 5 Why's Assessments

'Data is of course important...
but I place the greatest emphasis
on facts'

Taiichi Ohno



Assessments = each level
 finding understanding on
 typical root causes
 fix know how problems
 fix onboarding problems
 finding your root cause

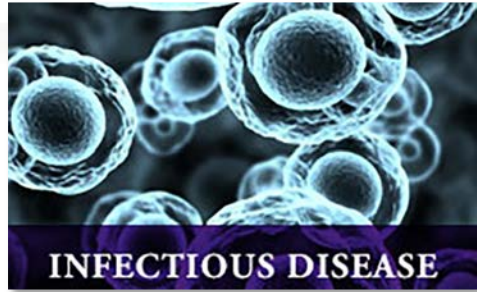


Team Self-Assessment

Team Name: xxxxxxxxxxxxxxxxxxxx Date: xx/x/20xx

Scoring: 0 - Never, 1 - Rarely 2 - Occasionally, 3 - Often, 4 - Very Often, 5 - Always

Area / Question	Score	
Product Ownership Health		
Product Owner facilitates user story development, prioritization and negotiation	3,0	
Product Owner collaborates proactively with Product Management and other stakeholders	3,0	
User Stories are small, estimated, functional, vertical, and fit in an iteration	3,0	
Product Owner facilitates development of acceptance criteria which are used in planning, review and story acceptance	3,0	
Team refines the Team Backlog every Iteration	3,0	
Total Product Health Score	15,0	60%



INFECTIOUS DISEASE

= Root cause
severity of illness
Rephrase The Problem





= Enabler

Hypothesis Statement

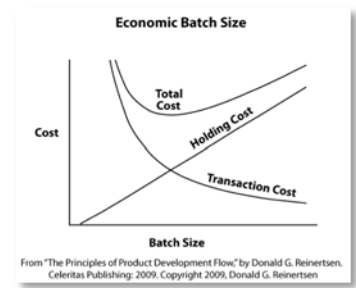
Take an economic View

WSJF = Cost of Delay _____.

Cost of the therapy

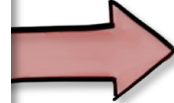
If it hurts - do it more often

PDCA - Learning Cycle



Failure Recovery is more important than Failure Avoidance

Failure Avoidance



Failure Recovery

